

产品手册

User manual

正弦波滤波器通过 LC 低通滤波原理将 PWM 载波调制信号转换为平滑正弦曲线，通过 L、C 参数配置可使波形电压畸变率降低至 5%

Traditional symmetric sinusoidal output filters are LC-low passes filters that convert the PWM signal of the frequency converter between the phases into a smooth sinusoidal curve. The residual ripple of the signal can be adjusted by using the values of the L and C. An optimum costbenefit ratio is often reached at a ripple voltage of 5%.



警告!

Warning

传动的所有电气安装和维护工作应该由具备资格的电气工程师操作。

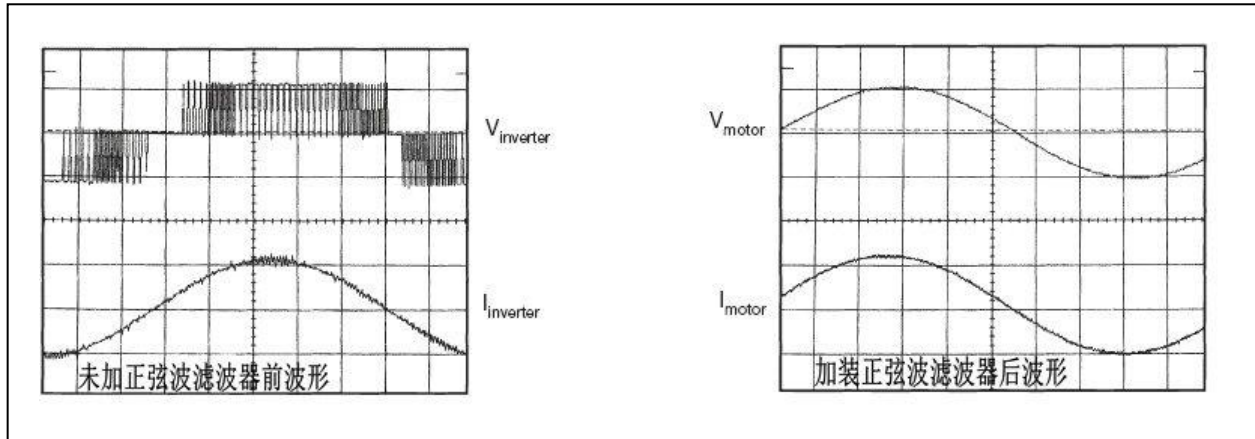
Operate by skilled electrical engineer

传动和连接装置必须接地。

Device must connect ground

绝不能对已接通电源的传动尝试任何操作。切断供应电源后，通常需要等中间回路电容放电5 分钟，然后才能对变频器、电机或电机电缆开始操作。运行前，最好用电压万用表检查传动已经放电。如果忽视，将造成人身伤害甚至死亡。

Prohibit any illegal operation when power.after power off and Capacitance discharged, Operating is allow.You must test voltage before Operating Capacitance. Ignore them it may result in serious personal injury or death.



技术规格

Technical specifications

额定工作电压： 3 Φ 400VAC 50/60HZ @ 40° C

Continuous operating voltage:

额定电流： 40℃时 5A - 1500A

Rated currents: @ 40° C (25° C)

电动机频率： 0-70Hz

Motor Operating frequency:

变频器开关频率： 2-5KHZ (见设备标签)

Switching frequency: 2-5KHZ (see Device mark)

抗电强度： 电感组件(Inductance) 3000VAC 60S;

High potential test voltage: RC组件(Capacitance) : P-P 2000VDC 2S

P-E 2500VDC 2S

防护等级： IP00

Protection degree

绝缘等级： T40/F (155℃)

Insulation level

温度范围： -25℃ - +85℃ (40℃ 以上需要进行额定值降低!)

Temperature range (operation and storage):

正弦波滤波器 Sinusoidal output filters

额定电流时的压降: about 8% @ 400VAC 50HZ and rated current

Voltage drop @ Rated currents

剩余纹波电压: about 5%

Ripple voltage:

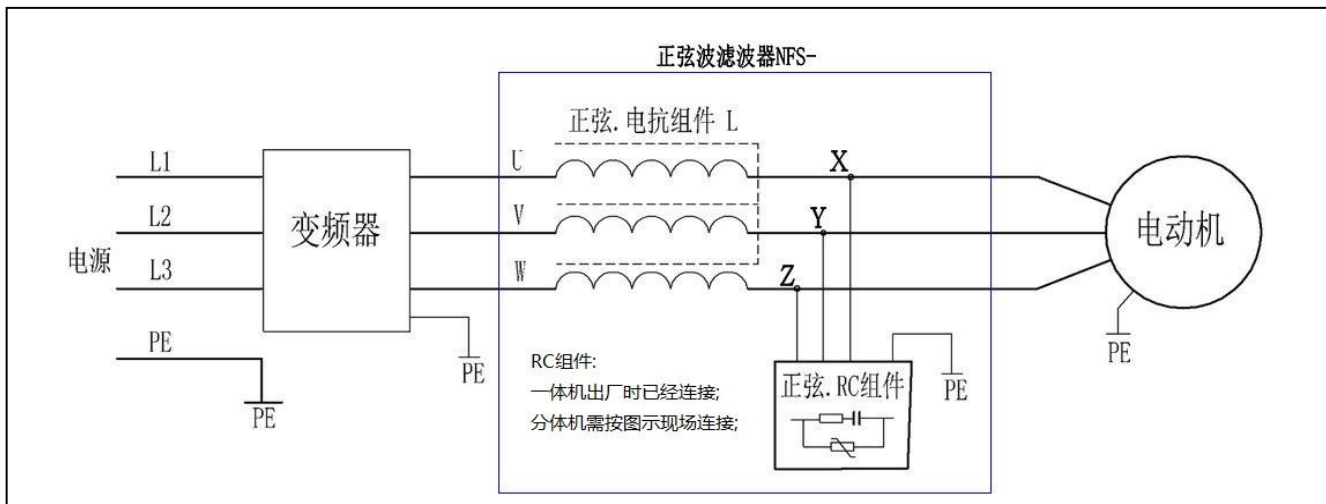
过载能力: 1.5 倍额定电流 1 分钟, 每小时 1 次

Overload ability 1.5In 1min/hour

执行标准: GB/T14549-1993 IEC61558-2-20

design standards

Typical electrical schematic



注: 请严格按照以上示意图说明接线, 否则易造成设备损坏。

功能和益处

Features and benefits

■ 有效降低 IGBT 输出的高 dv/dt , 保护电机免受电压尖峰影响, 延长电机寿命

Complete protection of the motor from dv/dt and overvoltages

■ 抑制变频器输出的电磁干扰, 消除了电机的电磁噪音

Reduction of the acoustic noise of the motor

■ 提高系统可靠性和运行安全

Increase in the reliability and operational safety of the overall system

■ 降低电机涡流损耗

Reduction of the additional magnetic losses and eddy current losses in the motor

■ 延长传输距离

Extend motor length

正弦波滤波器选型列表

型号 TYPE	适配功率 (KW)	额定电 流 (A)	绝缘 等级	重 量 (Kg)	参 考 尺 寸(±5mm)				
					外形尺寸			安装尺寸	
					W	D	H	W1	D1
NFS-41P5-VF	1.5	5A	F/H	6	160	100	180		
NFS-42P2-VF	2.2	7A	F/H	8	160	125	180		
NFS-43P7-VF	3.7	10A	F/H	10	160	125	180		
NFS-45P5-VF	5.5	15A	F/H	12	200	140	230		
NFS-47P5-VF	7.5	20A	F/H	14	200	140	230		
NFS-4011-VF	11	30A	F/H	16	240	160	250		
NFS-4015-VF	15	40A	F/H	18	240	160	250		
NFS-4018-VF	18.5	50A	F/H	20	260	180	300		
NFS-4022-VF	22	60A	F/H	22	260	180	300		
NFS-4030-VF	30	75A	F/H	25	320	225	350		
NFS-4037-VF	37	90A	F/H	30	320	225	350		
NFS-4045-VF	45	120A	F/H	35	320	235	350		
NFS-4055-VF	55	150A	F/H	40	350	250	380		
NFS-4075-VF	75	180A	F/H	50	350	250	380		
NFS-4090-VF	90	220A	F/H	60	400	250	440		
NFS-4110-VF	110	250A	F/H	80	400	250	440		
NFS-4132-VF	132	280A	F/H	100	480	280	440		
NFS-4160-VF	160	330A	F/H	120	480	280	440		
NFS-4185-VF	185	400A	F/H	150	500	300	450		
NFS-4220-VF	220	490A	F/H	180	500	300	450		
NFS-4250-VF	250	530A	F/H	200	550	330	450		
NFS-4280-VF	280	600A	F/H	220	550	350	480		
NFS-4315-VF	315	660A	F/H	250	550	350	480		
NFS-4355-VF	355	800A	F/H	300	600	450	550		
NFS-4450-VF	450	1000A	F/H	350	650	500	600		
NFS-4550-VF	550	1200A	F/H	400	650	500	600		
NFS-4630-VF	630	1300A	F/H	500	750	550	650		